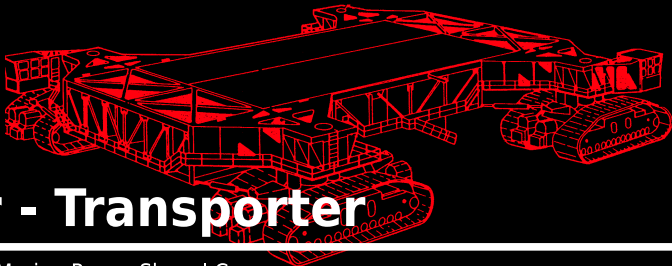


The NASA logo, featuring the word "NASA" in a bold, sans-serif font, with a stylized swoosh and stars above it.

NASA



Crawler - Transporter

Built by:	Marion Power Shovel Company		
Weight:	3,000 t	Engine Power:	9,639.27 hp
Height:	20 to 26 ft	Tank Capacity:	5,000 U.S. gal
Length x Width:	131 x 114 ft	Fuel Consumption:	125.7 U.S. gal/mi
Speed (loaded):	1 mph	Manufacturing Costs:	14 million \$
Load Capacity:	6,000 t	Model Year:	1965